

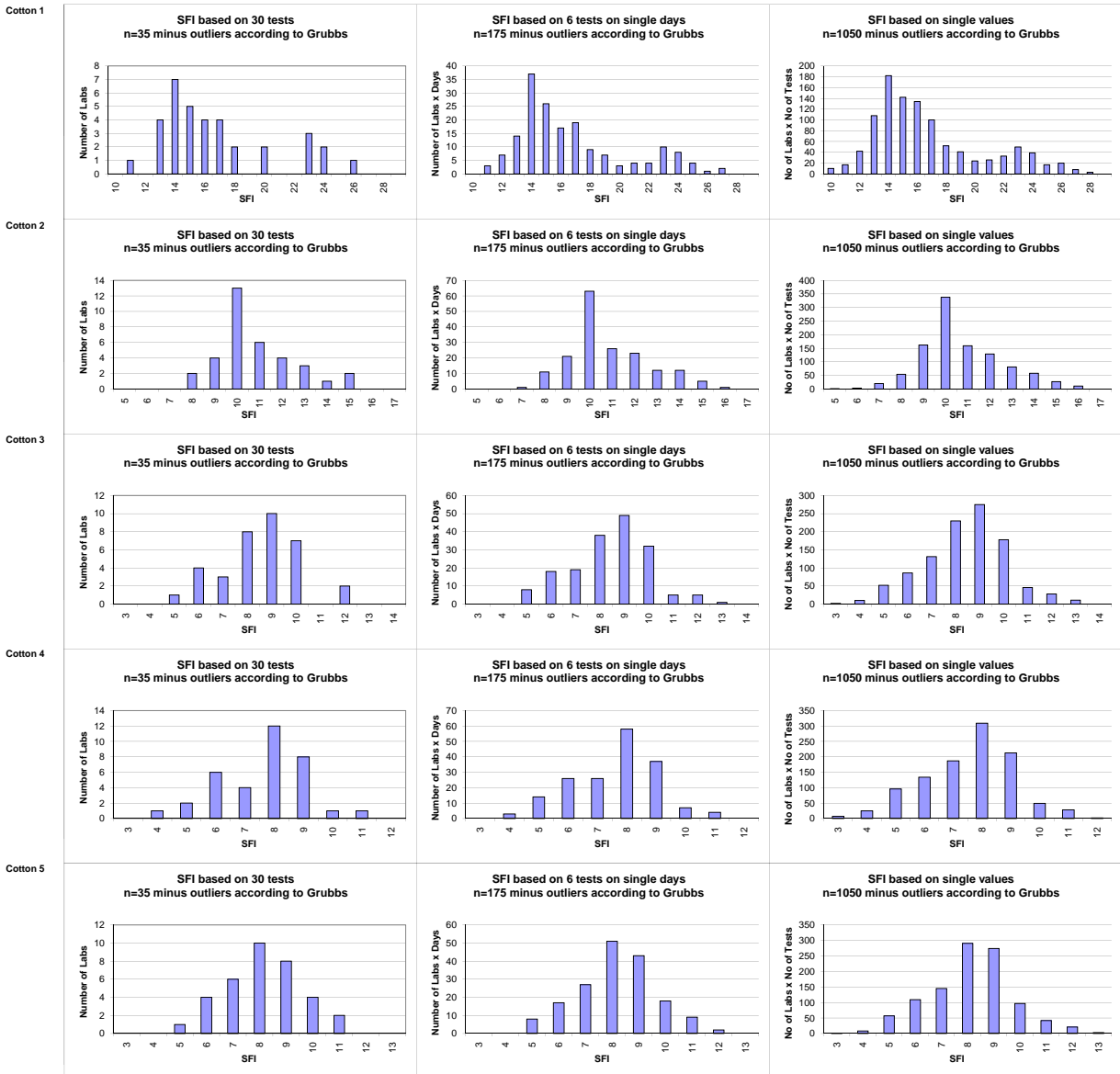
CSITC Round Trial GL 2009-3

Inter-Laboratory Averages, Inter-Laboratory Variations, Typical In-Laboratory Variations

SFI								
			Cotton 1	Cotton 2	Cotton 3	Cotton 4	Average	Cotton 5
Average of Laboratories (Grubbs)			16.774	10.803	8.449	7.590		8.163
Number Of Laboratories			35	35	35	35	35	35
Interlab. Variation	based on 30 tests	SD	3.759	1.740	1.568	1.458	2.131	1.454
		CV %	22.4	16.1	18.6	19.2	19.1	17.8
	based on 6 tests	SD	3.760	1.763	1.596	1.471	2.147	1.485
		CV %	22.4	16.3	18.9	19.4	19.2	18.2
	based on single tests	SD	3.816	1.822	1.677	1.539	2.214	1.565
		CV %	22.8	16.9	19.8	20.3	19.9	19.2
Typical In-Lab. Variation (Median)	between different days with each 6 tests	SD	0.473	0.325	0.273	0.179	0.312	0.236
		CV %	2.8	3.0	3.2	2.4	2.9	2.9
	between single tests on one day	SD	0.734	0.539	0.444	0.390	0.527	0.417
		CV %	4.4	5.0	5.3	5.1	4.9	5.1
	between all tests on different days	SD	0.884	0.559	0.505	0.419	0.592	0.509
		CV %	5.3	5.2	6.0	5.5	5.5	6.2

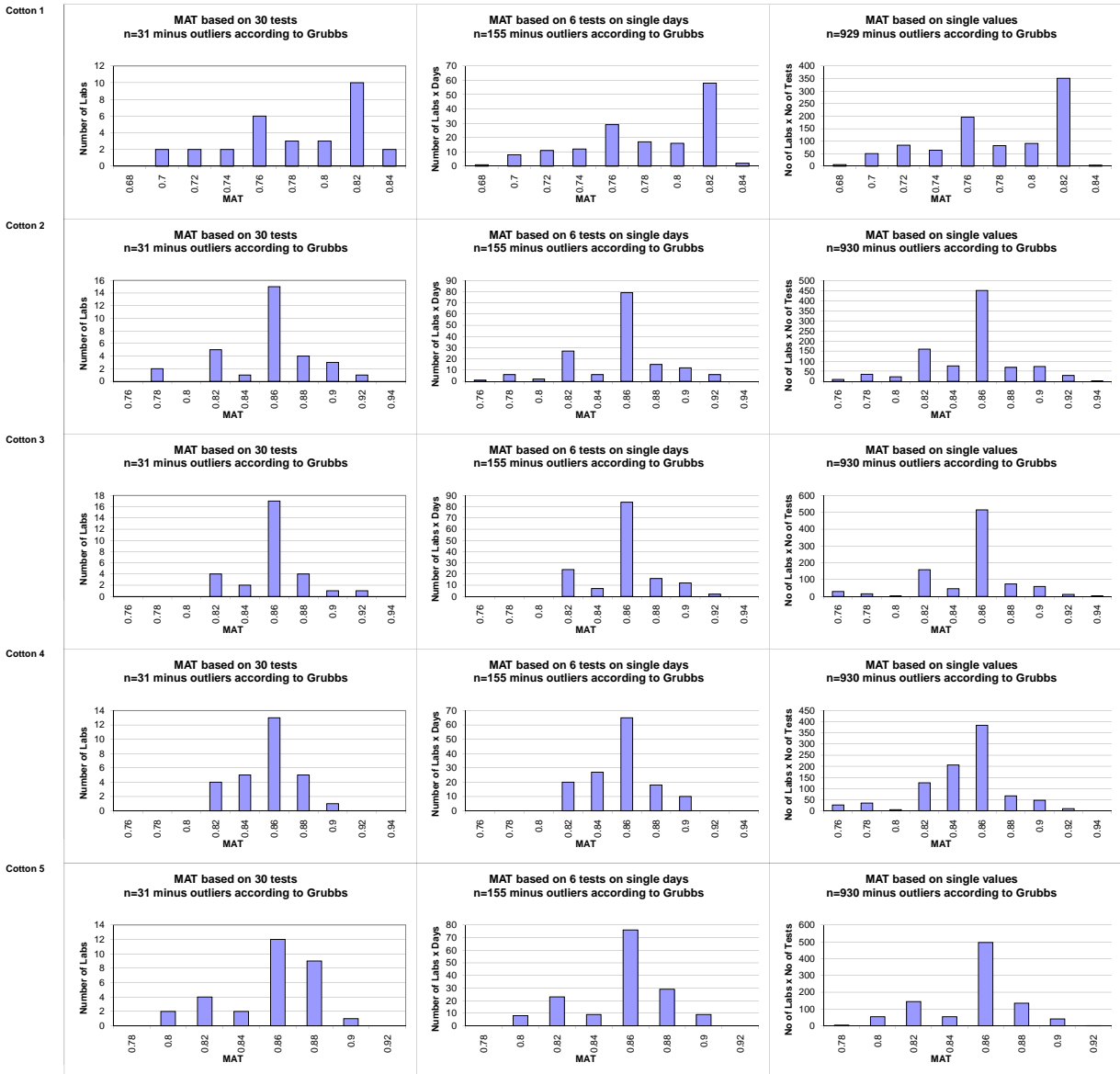
Maturity (MAT)								
			Cotton 1	Cotton 2	Cotton 3	Cotton 4	Average	Cotton 5
Average of Laboratories (Grubbs)			0.788	0.856	0.862	0.858		0.858
Number Of Laboratories			31	31	31	31	31	31
Interlab. Variation	based on 30 tests	SD	0.046	0.031	0.022	0.019	0.030	0.024
		CV %	5.9	3.6	2.6	2.2	3.6	2.8
	based on 6 tests	SD	0.040	0.030	0.022	0.019	0.028	0.024
		CV %	5.0	3.5	2.6	2.3	3.3	2.8
	based on single tests	SD	0.040	0.030	0.029	0.028	0.032	0.024
		CV %	5.0	3.5	3.4	3.3	3.8	2.8
Typical In-Lab. Variation (Median)	between different days with each 6 tests	SD	0.002	0.003	0.004	0.002	0.003	0.003
		CV %	0.3	0.4	0.4	0.3	0.3	0.4
	between single tests on one day	SD	0.003	0.003	0.003	0.004	0.003	0.004
		CV %	0.4	0.3	0.3	0.5	0.4	0.5
	between all tests on different days	SD	0.004	0.005	0.005	0.005	0.005	0.005
		CV %	0.6	0.6	0.6	0.6	0.6	0.6

GL 2009-3 General Evaluation for Optional Parameters
 Test Result Distributions
 SFI



(Only results from instruments/days/single tests that are not regarded as outliers according to Grubbs' method)

GL 2009-3 General Evaluation for Optional Parameters
 Test Result Distributions
 Maturity



(Only results from instruments/days/single tests that are not regarded as outliers according to Grubbs' method)